



# "The News"

Volume 8, Issue 8

July 2008



Message from the President...

The following are issues that were discussed at the July union meeting:

### Cost-of-Living Increase

On the paychecks for June 29, 2008 members should see the contractual cost of living increase. In accordance with Section 125 of the Collective Bargaining Agreement, a \$.1037 cents wage increase is applicable because the Consumer Price Index for Urban Wage Earners and Clerical Workers rose more than 4.5% from May 2008 over the May 2007 index number. I know its not a lot but every cent helps.

### Vote on Proposed Bylaw Change

A proposed bylaw was read at the June union meeting. At the August union meeting a vote will take place to approve the bylaw. All members in attendance will have the opportunity to vote on the bylaw.

The language reads as follows:

Proposed By-Law would become effective with the December, 2009 Election Cycle.

Add New Proposed amendment to the By-law section 7 (g)

Elect one (1) shop steward from and by Division Clerks and Related Personnel members system-wide.



### Local 689's New Slogan

Last month suggestions were given to the leadership on the best slogan for our campaign theme, we placed the favorites on the website and members weighed in on the various slogans and chose "We Make It Work", as the winner. The campaign promoting Local 689 members as the real movers and shakers of Metro will kick off the week of July 21<sup>st</sup> at Metro Center, Ballston and Addison Road. Union members will give away 689 smart cards to passenger with pass covers with the Local 689 logo and "We Make It Work" imprinted on them. After we finish everybody will know that we put the "M" in Metro and because we are professional transit employee's we do have the best ride in the nation.

### Upcoming Events

\* Local 689 Annual Ping Pong Tournament will be held 8/16/2008. See Anthony Garland to sign up. Come out and have some fun.

\* Local 689's Fish Fry is September 6, 2008, volunteers needed. Call the hall if you'd like to help in any way.

\* The Committee on Political Education is a large part of what we do as a local union. The lobbying efforts that we just won are a direct result of the work of that committee and our direct interaction with the politicians in this area. Join us as we, Local 689 kicks off its 2008 COPE drive on October 1, 2008. CP Parish, Matt Bryan, Brenda Thomas, Gerard Webb and Faye Lawson are the committee members. Local 689 will host a COPE dinner/dance on October 4, 2008 all proceeds will be donated to COPE. I'll save you a dance....

### Good News on Dues

The International has given Local 689 permission to waive the dues increase for 2008. The \$.45 per capita mandatory increase will go into effect on the next dues cycle and the \$1.90 increase which comes to the local union is waived. Please understand that the dues increase is an event that was voted on by delegates at the 1996 election it is an occurrence which occurs every year without any action by Local 689.

### Memorial For Our Fallen

For years we have discussed honoring our members who died while on the job. We started out attempting to get plaques put on the wall in the foyer of our beloved union hall, and last year we had a candle light vigil but have not made it an annual event. All of that fizzled.



Artist rendering of NLC Workers Memorial

Continued on page 2

The Executive Board was presented with an opportunity to honor our fallen members of Local 689 by participating in the workers memorial being built at the National Labor College -aka- George Meany Center. They took the challenge.

A \$10,000.00 contribution is being made to the National Labor College so that our members will have a permanent memorial for the world to see. All members will be remembered in a lasting place. On the magnificent lawn of the National Labor College running through the monument, will be numerous granite benches, each engraved with a special memorial message from Local 689.

That message will be for them all, from the very first whom gave their lives, to the very last who lost it. At the same time you can contribute to the future of our movement through education. The college is one of the few colleges directed specifically towards learning our craft, the labor movement. Someone will take the plunge and think out of the box and join thousands of students and learn through education how to further the movement, instead of just on the job training. Will it be you?

To find out about the classes offered telephone The National Labor College @ (301) 431-6400, Toll Free: 1-800-462-4237 or visit them on the web at [www.nlc.edu](http://www.nlc.edu).

### **For the Fourth Time....**

As many of you know there is another love that I have in the ATU other than Local 689. It is the International Women's Caucus. I have been honored to be an officer of that institution for nine (9) years. This year I was re-elected, unopposed, as their Chairman for a third time. Congratulations to MaryAnn Taylor, Local 1596-1749 in Orlando, Florida the Vice Chair, Antoinette Bryant, LU 1555 Oakland, CA is re-elected as Recording Secretary, Elain Vance, LU268 out of Cleveland Ohio was re-elected as Financial Secretary.

Thanks to the women of Local 689 "Today's Women" for all of your assistance and support through the years, I could not have done it without you.

### **689 gets International Recognition.....**

In last month's edition of the In-Transit they published an article about Local 689. I hope that when the members read it they felt proud knowing that they participated in an effort that will affect all transit workers in the United States and Canada.

### **Something New for You.....**

Starting the Corner Bus Stop Segment in the newsletter will be comprised of questions asked by members at various locations and the answers will be placed in the newsletter. This month the questions have come from Northern and Bladensburg.

### **We Continue to Try...join us**

Last month, TSSM track walkers met with

DGM, Gerald Francis, AGM for Rail, Dave Kubicek, and TSSM Supt. Davin Kelly. They discussed some of the on-going issues that have plagued the track department as well as offered suggestions on how to improve their work environment.

Throughout the year we attempt to bring different departments together with Metro's upper managers so that they can have face to face interaction with their employees and our members. These types of "Speakeasy's", we believe, have a positive impact towards improving the relationship between the two sides through communicating with each other.

### **Tee Time.....**

Last month you voted for members to participate in the Michael Jackson Golf Tournament and our team came in 2<sup>nd</sup> place— Wilbert Cunningham and David "Oops" Robinson, and two other Local 689 members. Job well done guys.

### **More on the "We Make It Work Campaign"**

Every since I started in this organization as a shop steward I have believed that one of the problems with the labor movement is the fact that we don't talk about what we do right, enough. With all that I know that is right with a union I can't understand why anyone would believe that there is anything wrong. Equal Pay for equal worth, two consecutive days off, holiday pay, overtime pay, I mean, all of the right stuff, but we still suffer from only 12% of the workforce being organized.

We must make our voices heard. It's called simply, "tooting your own horn." Some see bragging as a show of vanity or selfish pride, I see it as a way of letting America know that with all of the problems in our society there is a solution. Join a union! Every place I go I tell the story of how and why I am proud to belong to a union. It is the difference between being treated fair and unfair.



Jackie Jeter speaks to WAMU-FM listeners as a guest commentator on the public radio station.

For us in Local 689 it's the way that you know what your union is doing and how your money is being spent. You can feel proud about the positive accomplishments and understand those that you don't agree with. Get involved, the difference is a minimum wage dead end job and a respected position with decent wages, benefits and a voice.

*Jackie Jeter*

## ATU LOCAL 689 URGES SAFETY, PROTECTION OF TRANSIT WORKERS

### *Shooting of bus operator underscores need for greater security*

A veteran bus operator and member of Amalgamated Transit Union Local 689 was shot on Wednesday afternoon by a stray bullet while standing in the bus bay area at the Anacostia Metrorail Station, according to published news reports. The bullet grazed the bus operator in the back of his head and his injuries are not life-threatening. In addition to the Metro bus operator, two other people were shot in this alarming incident.

Wednesday's shooting demonstrates the need for increased safety on our region's public transit system. Over the past five years, assaults of Metro bus operators have more than doubled, from 36 in 2002 to 84 last year. With the safety of the riding public in their hands, Metro bus operators have been spat on, punched, slapped, attacked with bricks and rocks, and even sexually assaulted.

Public safety is among our highest priorities. Congress received legislation approved by the District Council to toughen penalties for assaults on Metro bus operators and rail managers. We urge Capitol Hill to act swiftly in approving "Transit Operator Protection and Enhanced Penalty Act of 2008."

Over the past 12 months or longer, Local 689 has urged the Authority to implement the following safety measures:

- Increase police presence on Metro buses.
- Invest in repair of malfunctioning security equipment and expansion of monitoring equipment, especially security cameras and emergency alert systems.
- Install protective shields in all Metro buses. The test-drive period in March should have provided enough evidence of the need and value for the device.
- Increase police presence at stations like the Anacostia Metrorail Station that have experienced repeated incidents that present safety risks to Metro workers and the general public.

Local 689 issues this public call to the Authority with the hopes that we can avert future violent acts and other threats to our members and the general public.

### *“The Labor News”*

#### **Smithfield Update**



Smithfield meat packing factory workers are asking union members (labor activist) to join them in their plight to get Smithfield unionized. I'm sure that some of you have heard the commercials and read the literature. It has been reported that workers have had fingers and lost limbs but not compensated by the company. Waited until they became ill and fired them to keep from allowing them to collect on health insurance and in 1 instance it was reported that workers who attempted to organize were beaten. So they are asking that you not buy Smithfield until they give their workers dignity. But we need to really take more of a role in helping to organize them.

For more information about Justice for Smithfield please visit, [www.smithfieldjustice.com](http://www.smithfieldjustice.com)

### **Study from 'Working America: Community Affiliate of AFL-CIO' shows that Working Women Need A Raise and a Break**

Some of the key findings from this study include the following:

- If woman had more time, they would work another job.
- Woman have little time for just themselves.
- Above all, Woman want a raise.
- Woman talk more to co-workers than partners, children or friends.
- Woman see having children as negatively impacting their careers.
- Woman identify with feminism.

Source: [www.workingamerica.org](http://www.workingamerica.org)

#### **Update on HR 676**

HR 676 is a bill that would institute a single payer health care system into the US by expanding a greatly improved Medicare system to every resident.

2 more Labor Councils have endorsed HR 676, which brings the total to 434 union organizations in 48 states, including 110 Labor Councils and 24 state AFL-CIO's.

## 10 Tips for Long-term Investors



### **What's the secret of being a successful investor?**

You might be surprised to learn that it has very little to do with investment returns. Returns depend on a myriad of factors – like corporate profit growth, Fed policy, market momentum, global conflict, inflation – over which investors have no control. Instead, most successful investors follow a few simple strategies to help them focus on those areas of the investment process where they can make a difference.

As the stock market goes through its various cycles, keep in mind the following 10 tips that have helped some long-term retirement investors:

#### **1. Stay balanced**

Most successful long-term investors allocate their assets among stocks, bonds, and cash. While each market period usually has a winning asset class, a change in the trend can cause a sudden shift in returns. By diversifying your investments among different asset classes, you may avoid the frustration or distress resulting from non-diversification.

#### **2. Inflation protection**

Inflation, which takes away your purchasing power, should be a paramount concern for conservative investors. Over long periods of time, stocks have historically provided the largest margin of protection against inflation. Extremely conservative portfolios (such as those that rely primarily on cash or stable value funds) eliminate most market risk, but actually increase inflation risk. Even a modest allocation of stocks may help conservative investors keep ahead of inflation.

#### **3. Stay diversified**

Diversification is one the investor's main tools for controlling risk. By owning portfolios of securities selected by different managers, the volatility that comes from a few securities and one management style can be muted.

#### **4. Focus on total return**

Balanced, diversified portfolios will usually have "winners" and "losers". Importantly, yesterday's loser can become tomorrow's winner. Therefore, concentrate on the overall return. It is what the total portfolio is earning, and that is where diversification benefits show up.

#### **5. Evaluate risk tolerance**

The current bear market has no doubt given investors a clear idea of their risk tolerance. By now, you should have re-evaluated your investment program, so that you feel more comfortable with your investment lineup.

#### **6. Maintain sound quality**

As you look to the future, remember that in good times it can seem that lower quality investments are preferable because they furnish better returns. The problem is that when times are not good, weak quality investments can fall significantly.

#### **7. Rebalance as needed**

Periodically, one asset type or investment option will perform differently from the rest, altering the asset allocation originally desired. Some investors take advantage of these opportunities to re-balance back to those initial allocations. These moves may allow better risk control and the ability to take advantage of market trends.

#### **8. Dollar cost average**

Dollar cost averaging – that is, paycheck withdrawals used to purchase investments – have proven to some investors to be a worthwhile strategy. Money is slowly and steadily invested in various market periods. When markets decline, it can seem that the savings are going into a losing investment. However, no one knows when a market bottom is reached, and dollar cost averaging provides a sound strategy of investing throughout uncertain periods. Dollar cost averaging plans do not assume profit or protect against loss in a declining market. Since plans involve continuous investment, regardless of fluctuating prices, an investor must consider his or her financial ability to continue to invest during low price levels.

#### **9. Set realistic expectations**

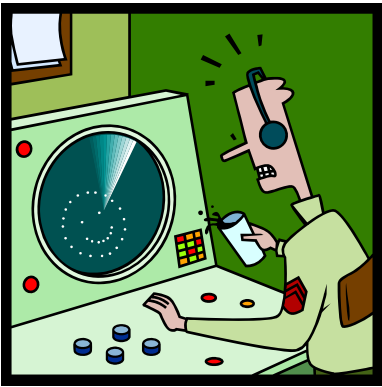
When the stock market generates high returns for an extended time (like the late '90s), investor's expectations can grow. If you compare today's market to the '90s, you may be disappointed. The solution is to keep expectations in line with long-term results.

#### **10. Increase contribution levels**

Perhaps the only "sure thing" about investing is that increasing your contributions to your retirement account today will probably increase your standard of living in retirement.

What happens to your retirement savings can take on a high level of importance. After all, it's your money and your future. However, worrying about the market's short-term gyrations produces little, except perhaps an ulcer. Successful long-term investors realize that returns are not a smooth trajectory, so they put together a well-constructed plan and then allow it to bear fruit over time.

For information on the 457 Retirement Plan, please contact your Retirement Plans Specialist, Al Slocum at 1-866-620-6069 or Ronald Samson at 1-888-803-2729.



## WMATA Supervisor's are Using Radar!

ATTENTION all Operators, Metro Supervisor's are out in force and equipped with radar guns! Authorized personnel will be writing violations for exceeding the speed limit and charging us with unsafe operation. Please slow down and operate by SOP. There are some stipulations.

- Supervisor must be outside of vehicle**
- Supervisor must have on his or her safety vest**
- Locations where radar is being used must be posted at each division**

Pre-trip inspection form must be completed and checked, indicating speedometer is not working

**PLEASE SLOW DOWN AND BE SAFE, WE ARE BEING WATCHED!**

*Walter Butler/ Assistant Business Agent  
For Local 689*

## Respect and Recognition of Local 689

The price of gas is having a profound effect on everyone.

As the major oil companies try to find ways to justify the continued escalation of gas prices and record profits, Local 689 members continue to provide the Washington Metropolitan region with vital transportation services.

Is Metro really that important?

What other business entity can honestly say they give more to the fundamental fabric of the Nations Capital?

Can you remember how the region looked before Metro?

The Washington Metropolitan region is like a big human body and Metro is the vital circulatory system that keeps the body alive and well.

Growth around Metrorail stations continues to transform each area into thriving employment and business mega centers. As a result, each month ridership is setting new historical records.

When we think about safety and homeland security, it's important to remember that on 9/11/2001, when most of the Federal Government shut down, it was Metro that prevented the region from being paralyzed with gridlock.

And now that gas prices have reached all time highs, Metro has finally become a recognized blessing.



The beginnings of the ATU began with the first horse drawn, 'omnibus', 1832.

### Metro is the best deal in town!



Local 689 has now expanded to trains and buses and continues to grow!

Last week, Local 689 members reviewed and discussed contract proposals from both WMATA and Local 689.

Local 689 members were surprised by the regressive tone of the WMATA proposals.

Why?

It's paramount for the Federal and local jurisdictions to properly fund Metro and provide Local 689 a contract representing the recognition and dedication of our members.

What would have happened to the Washington Metropolitan Region without Local 689?

*-Jim Madaras*



### The Corner Bus Stop

Call it an editorial, call it a Q&A session, you can even call it a speakeasy but I call it an opportunity for members to ask questions and get answers.

We have began by simply having someone come out to the various locations and ask members to give questions that they would like to have answered by the union leadership. All of the questions will be posted on the website after each session but some will also appear in this

newsletter for those who may not have computers at home. OK, here's our maiden voyage of "The Corner Bus Stop".

Questions

**Q:** Why do we pay dues and not get represented for three months?

**A:** The two issues are separate. The first, I went back to the 1946 contract, and found language in the contract between WMATA and Local 689 giving WMATA the right to have a 90 day probationary period. That 90 days allows Metro to monitor whether you are going to be a good employee, such as, being punctual for work, whether you have absenteeism issues, whether your have accidents and whether you are going to make a good employee. The second issue is 30 to 45 days after you turn-in or your hire date, union dues comes out. But think about it this way, you begin accruing seniority under the union system so that no one hired after you can be moved ahead of you when you pick a run or as you begin accumulating seniority for a vacation. The clock begins ticking and 90 days after that you begin using the best negotiated health care in the area. You come out of class earning union negotiated wages, not the Metro chosen wages like the ones that you earned in training. You are a union member, Metro can not choose to treat you differently because of your gender or color. Although you can not write a grievance, the Metro does not have the right treat you differently.

**Q:** We should eliminate the 5-year period for sick leave.

**A:** There was a contract proposal submitted to Metro by the Union to eliminate the period.

**Q:** Street Supervisors lack people skills and do not speak to us with respect.

**A:** We have to begin writing letter when disrespectful acts are committed by supervisors just like they write an infraction on us and we have to keep writing until it is addresses by their superiors.

**Q:** Why do you have to go to remedial training for the 3 non-preventable.

**A:** An operator processes 2 types of driving skills to avoid accidents, offensive and defensive.

**Q:** Why has Metro hindered us from up-grading our AFLAC policy once enrolled?

**A:** AFLAC is not a negotiated benefit between the Union and Metro. Payroll, as a favor to the union, has those funds taken out of your check. You need to contact your AFLAC subscriber to have the problem taken care of, if you do not have the telephone number or name, call the union hall and we can give you the representatives number.

**Q:** We need to get a way to get the union information from meetings out to members that are unable to attend.

**A:** At some point the Executive Board of Local 689 and the members will vote to change the designated meeting dates and time but until then I can only tell you to request the information from your prospective shop steward, read the newsletter and go to the web page. I have been toying with a discussion session on the website that will be about information from information discussed in the meetings as well as current issues concerning the work force but I haven't had time to develop it yet. But you to have an obligation, meetings are held the first Tues. @ 8 pm and Wed. @ 10 am, find time in your busy schedule to attend at least every other month. Members can be so much more informed if they just plan it into their schedule. Get involved and make a difference.

**Q:** Vacation pay for mechanics should reflect the 60 or 70 hours actually worked.

**A:** In order to change vacation pay it is done with a contract proposal but none of our vacation pay reflects our overtime hours except the extra board operators and that's because they have to work anything that is assigned to them. But no other job in America gives you

**ATTENTION ALL METRO RETIREES!!**

**Please note the recent changes to the Retirees' luncheons:**

To all members, spouses of members, and to all those who retired from AB&W and WMATA, which were all represented by Local 689. This includes former Local 689 members which were moved to Local 2. Plans for the coming fiscal year, which begins July 1, 2008 to June 30, 2009 have been made:

1. Retired Members  
(Three Luncheons): \$20.00
2. Member's Spouses  
(Three Luncheons): \$23.00
3. Guest (Per Luncheon) :\$10.00

**Date for Luncheons:**

1. July 31, 2008
2. October 31, 2009
3. March 26, 2009

The Associations Officers and Board Members ask that you reserve your place no later than the Friday prior to the luncheon.

Please call the following to reserve:

- Maxie Stallworth: 202-889-7165
- Bernice Barnes: 240-678-8257
- Floyd Seymore: 703-360-2887

July 2008

# Local 689's Calendar of Events!



Sunday	Monday	Tuesday	Wednesday	Thursday	Friday	Saturday
		1 <b>UNION MEETING 8 pm</b>	2 <b>UNION MEETING 10 am</b>	3	4 Office Closed 	5
6	7	8 Safety meeting 10-11:45 a.m.	9 Arbitration Josephine Proctor	10	11	12 <b>Six Flags Picnic</b>
13	14 Arbitration John Pfeifer  Pension Meeting	15 <b>ASE NEGOTIATIONS</b>	16	17	18 <b>North Carolina Retirees Week end</b>	19 <b>North Carolina Retirees Week end</b>
20 <b>North Carolina Retirees Week end</b>	21 <b>We Make it Work Campaign Kick off!</b>	22	23 Arbitration George Bukowski	24 Local 689 Quarterly Meeting	25 Executive Board Meeting	26
27	28 Arbitration Joshua Webb	29	30	31		

## Congratulations to Metro Retirees!

### May 2008

Harry J. Banks  
Dempsey Barnes  
James W. Beale  
George L. Brown  
Donald Evans  
John Fink  
Theodore Hamlin  
Wayne E. Hudgens  
William "Bill" Jackson  
Cherie T. Kane  
James Kearney  
George Kohlhaas  
Gerald Parker  
Walter L. Parker  
William Macklin  
John Murray  
Trung Van Nguyen  
Jacqueline Lewis  
James J. Mulcahey III  
John H. Murray  
Wajid A. Salam  
Bruce C. White  
James Wilkins  
Leroy Worsely  
John Valentine  
James B. Williams  
Deryl D. Written

Tracey L. Alexander  
Kenneth A. Baylor  
Christopher P. Brown  
Leonard Carpenter  
Willie L. Crosland  
Ronald E. DeShong  
Leroy E. Dice  
Augustus Dickens  
Roger T. Donnelly  
Jimmie A. Duddley  
Iraj Farjam  
Bernard W. Firsby  
Christine Getek  
Brenda A. Kelly-Goodwin  
Ernest L. Gripper Sr.  
Phillip A. Hart  
Willard H. Pinkney  
Roy S. Pulk  
Anthony Rice  
James E. Romick Sr.  
Lidia C. Sanchez  
Jerry R. Shipman  
Seyed M. Shojaat  
Charlie J. Smith  
Sharon P. Thompson  
Nang K. Trinh  
George H. Turner  
Gregory W. Watson  
Roger K. Wilson  
Rulious C. Wilson  
Herman Williams  
Willie Wannamaker

### June 2008

Allen D. Adams  
Hunter J. Alexander

## Important Union Event Dates:

August 16, 2008: Ping Pong Tournament  
September 6, 2008: Annual Fish Fry  
October 1, 2008: COPE Kickoff  
October 5, 2008: COPE Dinner and Dance

### OBITUARIES

**WITH SADNESS WE  
ANNOUNCE THE PASSING  
OF OUR FELLOW  
LOCAL 689 MEMBERS**

John E. Blowe 03/13/2008  
Arnold Buckland Jr 06/08/2008  
George F. Elimer 06/23/2008  
Pella F. Elliott 12/29/2007  
William E. Field 05/31/2008  
William H Ford 05/21/2008  
Lewis James 05/04/2008  
Keith D. Jones 02/18/2008  
Lemuel C. Hunt 06/12/2008  
Benjamin D Medley 05/28/2008  
James Raney 06/25/2008  
Thomas Russell 06/13/2008  
Deborah R. Smith 05/06/2008  
William Shields Jr. 05/12/2008  
Lamonte Vines 04/04/2008  
Chester Wasielewski 06/11/2008  
Melvin White 03/17/2008  
Percy E. Willis 02/05/2008

• **Attend Your Union Meetings!**

- 1st Tuesday Evening of Each Month @ 8:00 p.m.
- The Following Wednesday Morning of Each Month @ 10:00 a.m.

The meetings are held at your Union Hall:

2701 Whitney Place  
Forestville, MD 20747

Phone: 301-568-6899  
Fax: 301-568-0692  
Health and Welfare: 301-568-2294  
E-mail: unionhall@atulocal689.org  
Newsletter E-mail:  
newsletter@atulocal689.org



**LOCAL 689 ANNOUNCEMENTS**



**"Grievance Updates"**

Settled Grievances for May: 40  
Settled Grievances for June: 65  
Dropped Grievances for May: 22  
Dropped Grievances for June: 18  
Arbitrated Grievances for May: 3  
Arbitrated Grievances for June: 2

**Arbitration Decisions:**

John Slade: Failure to report suspended license. **LOSS**  
Tony Roseboro-El: 5 day suspension reduced. **WIN**  
Dana Hallmon: Medical delay in returning to work after Sec. 124. **WIN**  
Maurice Waller: Reinstated after discharge retired p/t **WIN**  
Rommie Pettaway: Improper door opening. **WIN**  
DeAngelo Beatty: **WIN**  
Steven Schneider: Improper email use. **WIN**  
Michael Mitchell: **WIN**  
Myrtle Head: Discharge. **LOSS**  
John Slade: **LOSS**  
Scott Dickens: Absenting self from work site w/o permission. **LOSS**



**17th Annual  
Cancer/Leo  
July 26, 2008.  
10 am to dark**



**Cookout at the Beach!  
Breezy Point Beach**

\$6 for age 12-55, \$4 age 3-11  
2 and under free

Beef, Pork Ribs, BBQ Chicken, Hotdogs,  
1/2 smokes, Fish and Hamburgers.  
Please bring a side dish if possible!

Take Penn. Ave. (route 4) to Maryland to  
route 260 and follow all the way to route  
261 and make a right on 261. Take 261 to  
Breezy Point Road and make a left. Then  
follow the signs to the beach.

**Contact Derrick Gray: 240-463-8438**

**President:**

Jackie L. Jeter

**First Vice President:**

Roland Jeter

**Second Vice President:**

Larry Lockley Jr.

**Financial Secretary-Treasurer**

Esker Bilger

**Recording Secretary**

Anthony Garland

**Executive Board Members:**

James Alford

Shelia Quarles-Alston

Anthony Barnes

Earl Beatty

Herman Brown

Matthew Bryan

Walter Butler

Timothy Busby

Wilbert Cunningham

Nathan Hall

Gerry Garnett

Judy Holton

Cathleen Jackson

Raymond Jackson

James Madaras

Michael Myrick

John Nixon

David Robinson

Gerard Webb

**Shop Stewards**

Beverly Cooper

Jacob Ayers

Warren Chapman

Brenda Quarles-Cummings

William Dudley

Barbara Middleton

Derrick Gray

Calvin Barnes

Byron Barnes

Eddie Broidy

Donald Parish

William Cuff

Diane Boyd

Tracy Stokes